



Alternative BEHAVIORAL CARE

100% Of Our Patients Are Satisfied with Our Services
And Our Testimonials Are Endless!!!

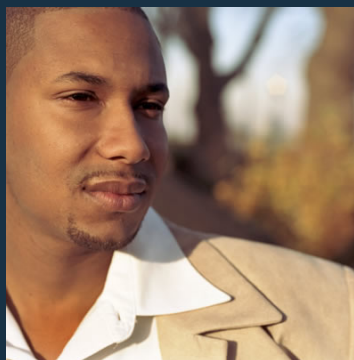
We are *Proudly* Serving the
Emotional and Mental Health Needs
of Our Community With Our



- Child Mental Health Program, Ages 4-11
- Adolescent Mental health and Substance Abuse Programs, Ages 12-17
- Adult Mental Health and Substance Abuse Programs
- Exclusively Women's Mental Health and Substance Abuse Programs

Call us to find out how we can help your clients and loved ones....

[VISIT OUR WEBSITE](#)



Certain Behaviors Often Precede Suicide Attempt

A recent study released at the 28th European College of Neuropsychopharmacology Congress in Amsterdam reports that risky behavior, psychomotor agitation, impulsivity, and the presence of "depressive mixed states" often precedes a suicide attempt. Knowing what behaviors to look for will further enhance a clinician's ability to prevent suicide. [Learn More](#)

SSRIs in Pregnancy: Divergent Findings

A population-based study in the online Journal of American Psychiatry found that women treated with SSRIs during pregnancy had a lower risk of pre-term birth but a higher risk of neonatal complications. The findings provide evidence for the protective role of SSRIs such



as an almost 50% lower risk for very pre-term birth compared to women with psychiatric disorders who did not take SSRIs. [Learn More](#)

17th Annual Community Services Summit

Please join us at the 17th Annual Community Services Summit to be held at Calvary Church - Mid-Rivers Mall Drive on October 27, 2015. The Community Services Summit is a day-long series of workshops designed to build a stronger community through professional connections and education. Breakout sessions will provide information on the topics most critical to working with children and families. [Register](#)

[Website](#) [Staff](#) [Mental Health](#) [Substance Abuse](#) [FAQ](#) [Contact](#)



**SIGN UP FOR
OUR EMAILS**



**SHARE THIS
EMAIL**

Alternative Behavioral Care

<http://alternativebehavioralcare.com>

636.477.6111

